

To deepen understanding about family dynamic during COVID-19,  
Studio of Continuing Education in Psychology,  
Faculty of Psychology Universitas Padjadjaran presents:

# SHORT COURSE: FAMILY DURING COVID-19



**PROF. DR. HJ. HENDRIATI  
AGUSTIANI, M.SI.,  
PSIKOLOG**

UNIVERSITAS PADJADJARAN

## OPENING AND GENERAL INTRODUCTION: FAMILY'S SITUATION DURING COVID-19

November 27<sup>th</sup> 2021

**Every Saturday  
from November 27<sup>th</sup>  
2021 to January 15<sup>th</sup>  
2022**



**ALISSA WAHID\***

FAMILY PSYCHOLOGIST,  
SDGS AMBASSADOR FOR  
INDONESIA 2019-2021

\*in confirmation



**DESY RATNASARI, M.SI.,  
M.PSI., PSIKOLOG**

MEMBER OF PEOPLE'S  
REPRESENTATIVE COUNCIL

TALKSHOW:  
Indonesian  
Families during  
COVID-19  
13.00-14.30

WORKSHOP  
MODULE:

Introduction and  
General Rules  
15.00-17.00



**Moderator**

**Aulia Iskandarsyah,  
M.Psi., M.Sc., Ph.D.,  
Psikolog**

UNIVERSITAS PADJADJARAN

## MODULES

**Module 1:  
Working from Home  
December 4<sup>th</sup> 2021**

**Module 2:  
Marriage Issues  
December 11<sup>th</sup> 2021**

**Module 3:  
Motherhood  
December 18<sup>th</sup> 2021**

**Module 4:  
Learning during  
Pandemic  
January 8<sup>th</sup> 2022**

## JOIN US!

[bit.ly/SCFamilyCovid19](https://bit.ly/SCFamilyCovid19)

**CLOSING  
January 14<sup>th</sup> and 15<sup>th</sup> 2022**

## BENEFITS FOR PARTICIPANTS

1. Extend the knowledge about how COVID-19 alters family development both in Indonesian as well as in international settings.
2. Have a valuable chance to build international networks.
3. Have a possibility to win short course awards.
4. Obtain an e-certificate of the program at the end of the short course.
5. For workshop participants: have a chance to express themselves in a form of an autoethnography project and become important agents that inform the society about family situations and dynamics during the infectious disease event.

## PARTICIPANTS CRITERIA

All events *without* an active participation in the Workshop Module: both Indonesian and international students as well as public.

All events *including* an active participation in the Workshop Module: participants must have family members who were infected by COVID-19.

## FEE

Indonesian Participants:  
IDR300.000 (without Workshop)  
IDR450.000 (with Workshop)  
IDR75.00 / module\*

International Participants:  
USD25 (without Workshop);  
USD35 (with Workshop)  
USD7 / module\*

9882340519000004

BANK NEGARA INDONESIA

STUDIO PENDIDIKAN PSIKOLOGI BERKELANJUTAN

## CONTACT PERSONS

Nabilah M. L. Dinillah  
nabila18028@mail.unpad.ac.id  
+628111516120 (WhatsApp)

Amalia N. I. Ramadhani  
amalia18007@mail.unpad.ac.id  
+6287770078250 (WhatsApp)

\* If you want to participate in only one or some module(s)



psikologi.unpad.ac.id



fakultas.psikologi.unpad

COLLABORATORS:



OPENING AND GENERAL  
INTRODUCTION:

# FAMILY'S SITUATION DURING COVID-19



**PROF. DR. HJ. HENDRIATI  
AGUSTIANI, M.SI.,  
PSIKOLOG**  
UNIVERSITAS  
PADJADJARAN  
INDONESIA

**TALKSHOW:  
INDONESIAN  
FAMILIES  
DURING  
COVID-19**

**ALISSA WAHID\***  
FAMILY PSYCHOLOGIST,  
SDGS AMBASSADOR FOR  
INDONESIA 2019-2021  
INDONESIA  
\*in confirmation



**DESY RATNASARI, M.SI.,  
M.PSI., PSIKOLOG**  
MEMBER OF PEOPLE'S  
REPRESENTATIVE COUNCIL  
INDONESIA



**Moderator**  
**Aulia Iskandarsyah,  
M.Psi., M.Sc., Ph.D., Psikolog**  
UNIVERSITAS PADJADJARAN  
INDONESIA

NOVEMBER 27TH 2021

13.00 – 14.30

WORKSHOP MODULE :

# INTRODUCTION AND GENERAL RULES



Drs. Noer Fauzi Rachman, Ph.D., Psikolog

UNIVERSITAS PADJADJARAN  
INDONESIA

Hari Setyowibowo, S.Psi., M.Psi., Psikolog

UNIVERSITAS PADJADJARAN  
INDONESIA



Dr. rer. nat. Shally Novita

UNIVERSITAS PADJADJARAN  
INDONESIA

1. All active participants should have family members that were/are infected by COVID-19.
2. Active participants will be assigned an autoethnographic project.
3. Topic of the project: My (family) experiences with COVID-19.
4. In addition to a brief introduction at the beginning of the short course, participants will be assisted by a trained tutor.
5. Project duration: 5 weeks.

NOVEMBER 27<sup>TH</sup> 2021

15.00 – 17.00

# MODULE 1

# WORKING FROM HOME



Rezki Ashriyana Sulistiobudi, S.Psi., M.Psi.,  
Psikolog

UNIVERSITAS PADJADJARAN  
INDONESIA

Azhar El Hami, S.Psi., M.Si., Psikolog

UNIVERSITAS PADJADJARAN  
INDONESIA



Dr. rer. nat. Nurul Ain Hidayah Abas

UNIVERSITI PENDIDIKAN SULTAN IDRIS  
MALAYSIA

Dwiana Kusuma Wardhani

PT. UNILEVER INDONESIA, TBK  
INDONESIA



1. Organizational factors as support system for employee's well-being and productivity
2. New strategies managing workspace during working from home
3. Personal factors affecting employee's well-being during working from home: impacts and challenges to family dynamics
4. How to best maintain ourselves well-being as employees and our family well-being?



DECEMBER 4<sup>TH</sup> 2021

10.00 – 14.30


## MODULE 2

# MARRIAGE ISSUES



Asteria Devy Kumalasari, S.Psi., M.Sc.,  
Ph.D., Psikolog

UNIVERSITAS PADJADJARAN  
INDONESIA



Langgersari Elsari Novianti, S.Psi., M.Psi.,  
Psikolog

UNIVERSITAS PADJADJARAN  
INDONESIA

1. Marital Relationship during Covid-19 Pandemic in Indonesia
2. Life Satisfaction and Quality of Life of Indonesian Married Individuals during Covid-19 Pandemic
3. International Family Strength Model: An Introduction

DECEMBER 11<sup>TH</sup> 2021

09.00 – 12.00

# MODULE 3

# MOTHERHOOD



**Dr. Fitri Ariyanti Abidin, M.Psi., Psikolog**

UNIVERSITAS PADJADJARAN  
INDONESIA

**Dr. Suwaibah Zakaria**

UNIVERSITI MALAYSIA SABAH  
MALAYSIA



**Laila Qodariah, S.Psi., M.Psi., Psikolog**

UNIVERSITAS PADJADJARAN  
INDONESIA

**Vidya Anindhita,  
S.Psi, M.Psi., Psikolog**

UNIVERSITAS PADJADJARAN  
INDONESIA



1. Mothers' Psychological Distress during COVID-19
2. Important determinants for mothers' distress (e.g., sociodemographic factors, social support, coping stress)
3. Parenting stress : Comparison between Indonesia and Malaysia
4. The influence of perception of COVID-19 on parenting stress and behavior
5. Management of parenting stress (Experiences of Indonesian and Malaysian Mothers)

DECEMBER 18<sup>TH</sup> 2021

09.00 – 12.00

## MODULE 4

# LEARNING DURING PANDEMIC



Dr. Fitriani Yustikasari Lubis, M.Psi, Psikolog

UNIVERSITAS PADJADJARAN  
INDONESIA

Puspita Adhi Kusuma W, S.Psi., M.Psi.,  
Psikolog

UNIVERSITAS PADJADJARAN  
INDONESIA



Dr. Soon Singh A/L Bikar Singh

UNIVERSITI MALAYSIA SABAH  
MALAYSIA



1. Supporting and Inhibiting Factors of Learning During Pandemic.
2. Family Dynamics and Family Roles of Learning During Pandemic.
3. Parental strategy for assisting children in Learning During Pandemic.
4. Learning During Pandemic from the Perspective of Malaysian Families.

JANUARY 8<sup>TH</sup> 2022

09.00 – 12.00





SEMINAR:



# FAMILY DURING COVID-19 IN GERMANY

TERESA HALLER

LEIBNIZ INSTITUTE FOR  
EDUCATIONAL TRAJECTORIES  
GERMANY

Parents' School Satisfaction during School  
Lockdown in Germany



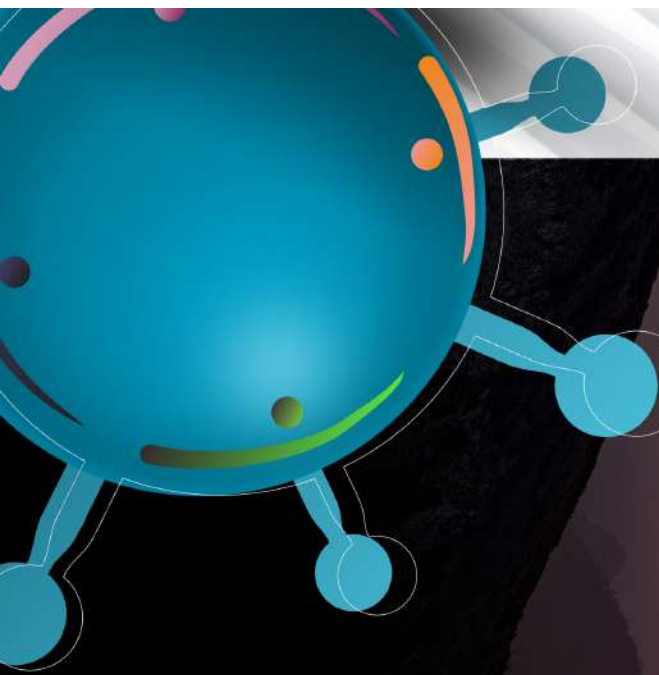
NURIYATUL LAILIYAH

UNIVERSITAS DIPONEGORO  
AND GOETHE UNIVERSITY  
GERMANY

Indonesian Family living in Germany  
during COVID-19

JANUARY 8<sup>TH</sup> 2022

14.00 – 16.00



# CLOSING

## JOIN US!

[bit.ly/SCFamilyCovid19](https://bit.ly/SCFamilyCovid19)

### SEMINAR:

### Mindfulness in Daily Relationship

JANUARY 14<sup>TH</sup> 2022 | 16.00 – 18.00



**Prof. Dr. Johan Karremans**

RADBOD UNIVERSITY  
THE NETHERLANDS

### CLOSING CEREMONY

JANUARY 15<sup>TH</sup> 2022

10.00 – 12.00

Wrap up  
Presentation from participants  
Awards announcement

### FEE

Indonesian Participants:  
IDR300.000 (without Workshop)  
IDR450.000 (with Workshop)  
IDR75.00 / module\*

International Participants:  
USD25 (without Workshop);  
USD35 (with Workshop)  
USD7 / module\*

9882340519000004  
BANK NEGARA INDONESIA  
STUDIO PENDIDIKAN PSIKOLOGI BERKELANJUTAN

\* If you want to participate in only one or some module(s)

### CONTACT PERSONS

Nabilah M. L. Dinillah  
[nabila18028@mail.unpad.ac.id](mailto:nabila18028@mail.unpad.ac.id)  
+628111516120 (WhatsApp)

Amalia N. I. Ramadhani  
[amalia18007@mail.unpad.ac.id](mailto:amalia18007@mail.unpad.ac.id)  
+6287770078250 (WhatsApp)



FOLLOW US!



[psikologi.unpad.ac.id](https://psikologi.unpad.ac.id)

[fakultas.psikologi.unpad](https://www.instagram.com/fakultas.psikologi.unpad)

COLLABORATORS:

